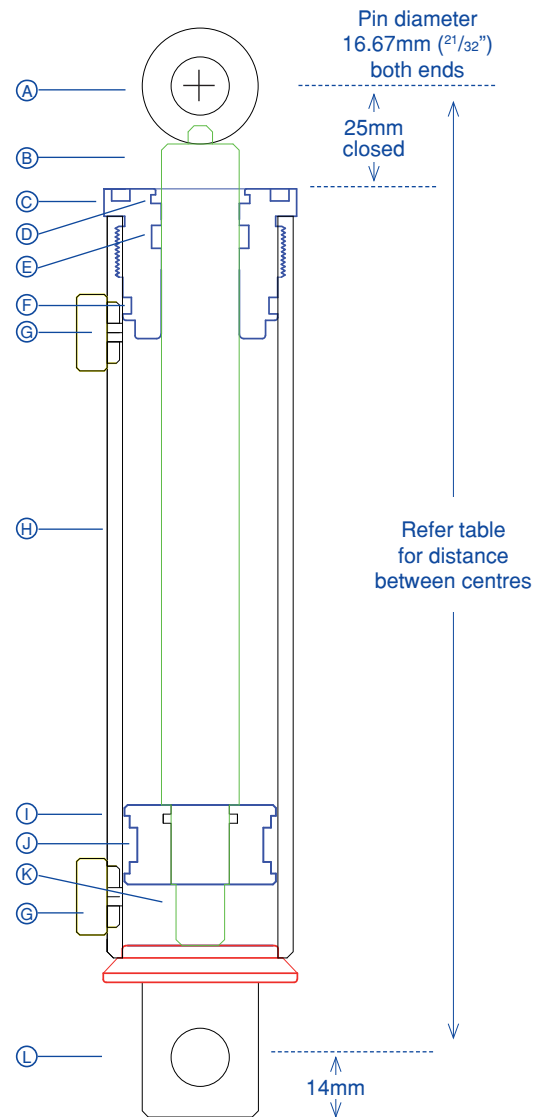


## 1 1/2" Bore Model



Specifications	
A	Knuckle: 30mm O.D. x 32mm Wide
B	Piston rod: 22.22mm (7/8") dia
C	Gland nut: Threaded into barrel
D	Rod wiper
E	Gland/rod seal: Single acting fluid
F	Gland/barrel seal: O-ring
G	Port: 3/8" BSP-T
H	Barrel: 48mm O.D
I	Piston
J	Piston seal: Kastas
K	Piston nut
L	Boss: 39mm O.D

Stroke	Distance between pin centres			
	Closed		Extended	
	mm	in	mm	in
6"	295	11 5/8	448	17 5/8
8"	346	13 5/8	549	21 5/8
10"	397	15 5/8	651	25 5/8
12"	448	17 5/8	753	29 5/8



Specifications given in this brochure are correct at time of publication. The manufacturer reserves the right to change specifications without notice.

### WARRANTY

Warranty on all hydraulic cylinders is 12 months full replacement except for earthmoving and heavy transport equipment where the warranty is only 6 months.

## GERRARD HYDRAULICS

39 Sorbonne Crescent  
Canning Vale WA 6155  
Ph: 08 9455 2344

F: 08 9455 2045  
E: enquiries@gerrardhydraulics.com.au  
W: www.gerrardhydraulics.com.au

## 2" Bore Model

### Light Industrial Hydraulic Cylinders

A range of cylinders economically priced specially developed for all light and medium duty applications.

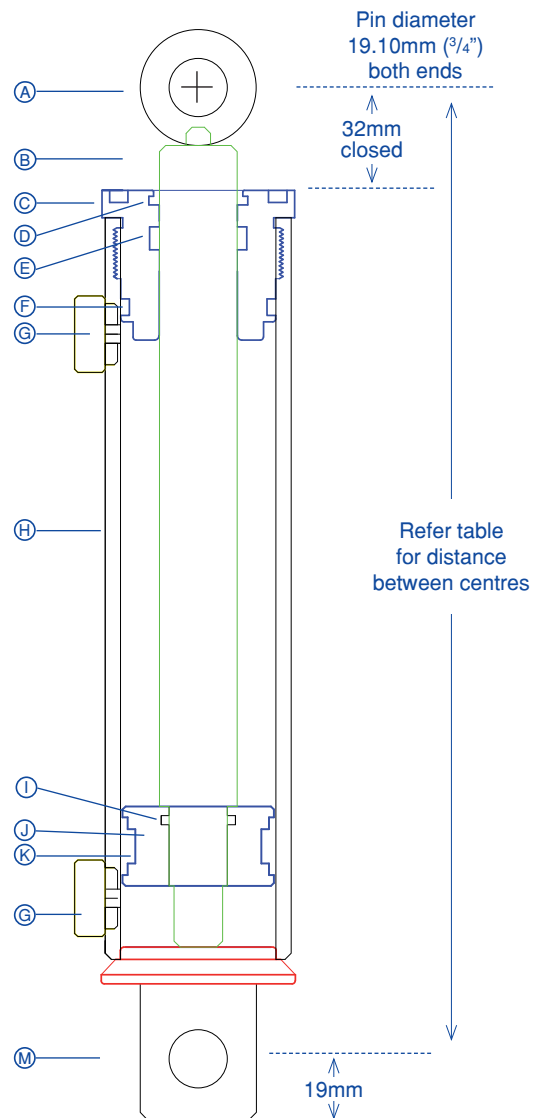


#### Features

- Internally threaded gland nut
- Hard chromed piston rod
- Pressure tested to 3000psi
- Available in all strokes

Specifications	
A	Knuckle: 30mm O.D. x 38mm Wide
B	Piston rod: 25.4mm (1") dia
C	Gland nut: Threaded into barrel
D	Rod wiper
E	Gland/rod seal: Single acting fluid
F	Gland/barrel seal: O-ring and back-up
G	Port: 3/8" BSP-T
H	Barrel: 61mm O.D
I	Piston rod seal: O-ring
J	Piston
K	Piston seal: Kastas
L	Piston nut
M	Boss: 38mm O.D

Stroke	Distance between pin centres			
	Closed		Extended	
	mm	in	mm	in
6"	318	12 1/2	470	18 1/2
8"	368	14 1/2	571	22 1/2
10"	419	16 1/2	673	26 1/2
12"	470	18 1/2	775	30 1/2



#### GERRARD HYDRAULICS

39 Sorbonne Crescent  
Canning Vale WA 6155  
Ph: 08 9455 2344

F: 08 9455 2045  
E: enquiries@gerrardhydraulics.com.au  
W: www.gerrardhydraulics.com.au