



**RECOMMENDED FOR:**

Fast, economic and safe mounting of hydraulic hose and hydraulic tube onto machinery and steelwork. The jaws of the clamp grip the hose or tube to reduce vibration, and help absorb noise and shocks.

**Ordering Details:**

**Order as Complete Clamps:**

**RCS** and **RCD** are packs of 5 complete clamps. ("D" is added after **RCS** and **RCD**, for example **RCS**D-06 is a pack of components for 5 complete **RCS**-06 clamps.) Complete Clamps are supplied unassembled.

**Order as Individual Components:**

Standard Pack Size for Components is 50 pieces for Groups 1 to 3, and 25 pieces for Groups 4 and 5.

**Size Selection:**

**RCS** Series Clamps are available with nominal diameters from 6 mm to 50,8 mm, **RCD** Series Clamps are available with nominal diameters from 6 mm to 42 mm. The Nominal Diameter Size of the Clamp is the minimum diameter range of the Clamp, for example, a 20 mm clamp suits Outside Diameters from 20,0 mm up to 21,9 mm. After assembly, the two Jaw halves of a correctly chosen Clamp should not contact each other.

**TECHNICAL DATA**

- **Specification:** **RCS** and **RCD** Series Mounting Clamps comply with Specification DIN 3015.
- **Operating Temperature:** From -30°C to +90°C (-22°F to +194°F).
- **Materials:**
  - Bottom Plate:** Steel, zinc plated and passivated (CrVI free).
  - Jaws:** Green, polypropylene. Upper and lower jaws are identical, and size is moulded into each half. Black, self-extinguishing polyamide jaws, are available on request.
  - Top Plate:** Steel, zinc plated and passivated (CrVI free).
  - Bolts:** Steel, plated.
  - Rails:** Steel, unplated.
  - Rail Nuts:** Aluminium.
  - Stacking Plates:** Steel, zinc plated and passivated (CrVI free).

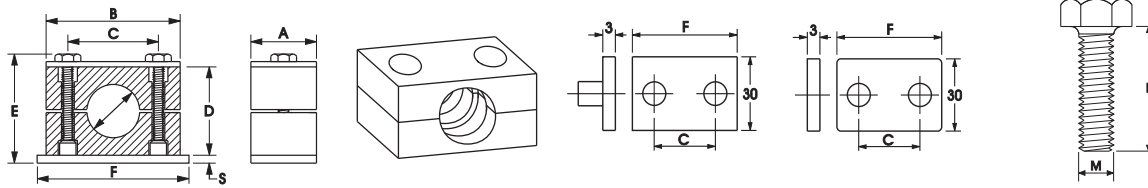
NOM. CLAMP SIZE	T1A T1D T1F	T2A T2D T2S	T3KA T3KD	H12A H12D H12S	SUITS HOSE TYPE & SIZE									
					RQP1	RQP2	RQP6	TXA2D	HSPA	HSHA	DF2A	PL1	RTH1	
mm														
10													PL13	RTH14
12	-3			-4									PL14	RTH16
12,7	-4			-5		RQP14		RQP64						
14							RQP24	RQP65				DF24A	PL15	
15	-5	-4		-6		RQP15								
16	-6					RQP16	RQP25	RQP66					PL16	RTH18
18										HSP04A		DF26A		
19		-6		-8			RQP26							RTH110
20	-8			-06		RQP18		RQP68		HSP06A		DF28A	PL18	
22	-10	-8		-10		RQP110	RQP28	RQP610	TXA28D	HSP08A			PL110	RTH112
25,4		-10					RQP210		TXA210D					
28	-12	-12		-12		RQP112	RQP212	RQP612		HSP10A		DF212A	PL112	RTH116
30				-12					TXA212D		HSH12A			
32										HSP12A				
35	-16			-16										
38		-16		-16		RQP116	RQP216		TXA216D	HSP16A	HSH16A			
42	-20													

Above details are correct as at time of publication. Selection chart is intended as a guide for the selection of clamps; manufacturing tolerances may affect size selection. Size selection of clamp should be confirmed with the actual hose to be used.

**MOUNTING**

Standard mounting is Weld On Bottom Plate. Can also be rail mounted, and can be stacked vertically on top of each other.

For Groups 1-3 of **RCS** Series Single Clamps; Double Bottom Plates and Multiple Bottom Plates allow mounting of more than one Clamp on a common bottom plate.



## RCS SERIES SINGLE CLAMPS

			RCS-J	RCS-PB	RCS-PT	RCS-BH
	NOMINAL CLAMP SIZE	COMPLETE CLAMP	JAWS (PAIR)	PLATE BOTTOM	PLATE TOP	BOX HEX (2 PER CLAMP)
1	6	RCS-06	RCS-06J	RCS-1PB	RCS-1PT	RCS-1BH
	8	RCS-08	RCS-08J			
	10	RCS-10	RCS-10J			
	12	RCS-12	RCS-12J			
2	12,7	RCS-127	RCS-127J	RCS-2PB	RCS-2PT	RCS-2BH
	14	RCS-14	RCS-14J			
	15	RCS-15	RCS-15J			
	16	RCS-16	RCS-16J			
	18	RCS-18	RCS-18J			
3	19	RCS-19	RCS-19J	RCS-3PB	RCS-3PT	RCS-3BH
	20	RCS-20	RCS-20J			
	22	RCS-22	RCS-22J			
	25	RCS-25	RCS-25J			
	25,4	RCS-254	RCS-254J			
4	28	RCS-28	RCS-28J	RCS-4PB	RCS-4PT	RCS-4BH
	30	RCS-30	RCS-30J			
5	32	RCS-32	RCS-32J	RCS-5PB	RCS-5PT	RCS-5BH
	35	RCS-35	RCS-35J			
	38	RCS-38	RCS-38J			
	42	RCS-42	RCS-42J			
6	50,8	RCS-508	RCS-508J	RCS-6PB	RCS-6PT	RCS-6BH

**\*NOTE:** Part Numbers shown are for standard ribbed jaws. Smooth Bore jaws are also available; add **S** to end of Part Number.

EXAMPLES:

**RCS-06S** is Part Number for complete clamp with smooth jaws.

**RCS-06JS** is Part Number for smooth jaws pair.



STANDARD RIBBED JAW

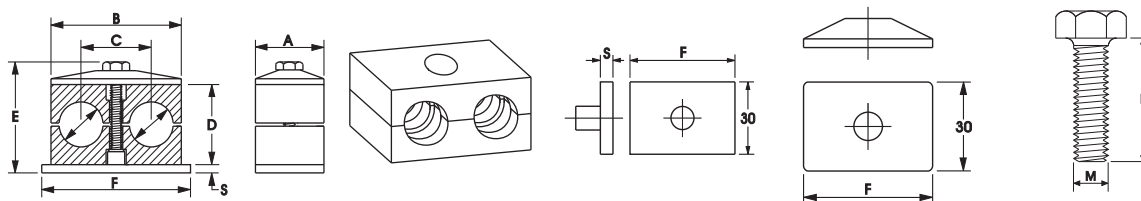


SMOOTH BORE JAW

Clamps are divided into Groups 1 to 6. Within each Group, all components except the Jaws have the same size.

DIMENSIONS mm	A	B	C	D	E	F	S	BOLT M x L
GROUP 1	30	37	20	27	37	42	3	M6 x 30
GROUP 2	30	43	26	33	43	48	3	M6 x 35
GROUP 3	30	50	33	35	45	55	3	M6 x 40
GROUP 4	30	57	40	42	53	62	3	M6 x 45
GROUP 5	30	68	52	58	69	74	3	M6 x 60
GROUP 6	30	86	66	66	77	88	3	M6 X 70

**ASSEMBLY INSTRUCTIONS:** See page 331.



## RCD SERIES DOUBLE CLAMPS

			RCD-J	RCD-PB	RCD-PT	RCD-BH
	NOMINAL CLAMP SIZE	COMPLETE CLAMP	JAWS (PAIR)	PLATE BOTTOM	PLATE TOP	BOX HEX (1 PER CLAMP)
GROUP	mm	PART NO*	PART NO*	PART NO	PART NO	PART NO
1	6-6	RCD-06	RCD-06J	RCD-1PB	RCD-1PT	RCD-1BH (Use RCS-2BH)
	8-8	RCD-08	RCD-08J			
	10-10	RCD-10	RCD-10J			
	12-12	RCD-12	RCD-12J			
2	12,7-12,7	RCD-127	RCD-127J	RCD-2PB	RCD-2PT	RCD-2BH
	14-14	RCD-14	RCD-14J			
	15-15	RCD-15	RCD-15J			
	16-16	RCD-16	RCD-16J			
	18-18	RCD-18	RCD-18J			
3	19-19	RCD-19	RCD-19J	RCD-3PB	RCD-3PT	RCD-3BH
	20-20	RCD-20	RCD-20J			
	22-22	RCD-22	RCD-22J			
	25-25	RCD-25	RCD-25J			
	25,4-25,4	RCD-254	RCD-254J			
4	28-28	RCD-28	RCD-28J	RCD-4PB	RCD-4PT	RCD-4BH
	30-30	RCD-30	RCD-30J			
5	32-32	RCD-32	RCD-32J	RCD-5PB	RCD-5PT	RCD-5BH
	35-35	RCD-35	RCD-35J			
	38-38	RCD-38	RCD-38J			
	42-42	RCD-42	RCD-42J			

**\*NOTE:** Part Numbers shown are for standard ribbed jaws. Smooth Bore jaws are also available; add **S** to end of Part Number.  
 EXAMPLES: **RCD-06S** is Part Number for complete clamp with smooth jaws.  
**RCD-06JS** is Part Number for smooth jaws pair.

Clamps are divided into Groups 1 to 5.  
 Within each Group, all components except the Jaws have the same size.

DIMENSIONS mm	A	B	C	D	E	F	S	BOLT M x L
GROUP 1	30	37	20	25	40	37	3	M6 x 30
GROUP 2	30	53	29	26	43	55	5	M8 x 35
GROUP 3	30	67	36	37	54	70	5	M8 x 40
GROUP 4	30	82	45	42	60	85	5	M8 x 45
GROUP 5	30	106	56	54	72	110	5	M8 x 60

### ASSEMBLY INSTRUCTIONS

Assembly with Bottom Plate.

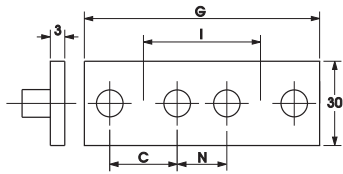
Weld metal Bottom Plate in position. (Do not weld with Polypropylene Jaws in place). Position lower half of Jaws on Bottom Plate. Insert Hose or Tube. Position upper half of Jaws over Hose or Tube and secure in place with Top Plate and Bolt(s).

Bolt Torque; see page 333.

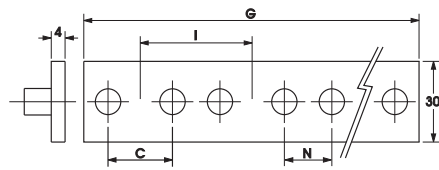
Assembly with Rail Mount Components and Stacking Components; see pages 332 and 333.

Clamps should be positioned both before and after bends, as near as possible to the bend.

## RCS CLAMPS DOUBLE & MULTIPLE PLATE BOTTOM



**RCS-PD**

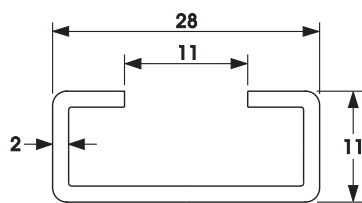


**RCS-PM**

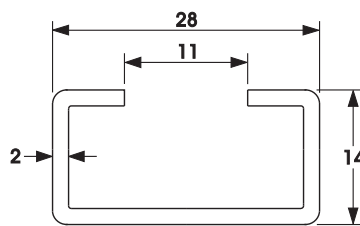
TO SUIT GROUP	DOUBLE BOTTOM PLATE FOR 2 CLAMPS	DIMENSIONS mm					MULTIPLE BOTTOM PLATE FOR 10 CLAMPS
		C	N	I	F	G	
GROUP 1	<b>RCS-1PD</b>	20	20	40	81	401	<b>RCS-1PM</b>
GROUP 2	<b>RCS-2PD</b>	26	18	44	91	443	<b>RCS-2PM</b>
GROUP 3	<b>RCS-3PD</b>	33	19	52	106	522	<b>RCS-3PM</b>

## RAIL MOUNT COMPONENTS

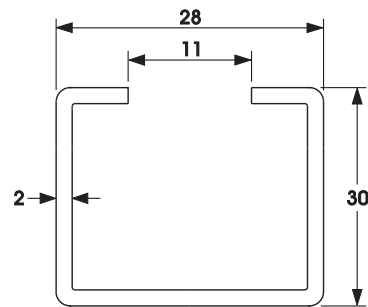
RAIL - SUPPLIED IN 2 METRE LENGTHS. SUITS RCS AND RCD SERIES CLAMPS. THREE DIFFERENT HEIGHTS.



**RC-RAIL-H11**

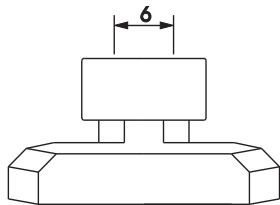


**RC-RAIL-H14**



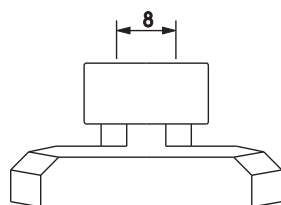
**RC-RAIL-H30**

## RAIL NUTS



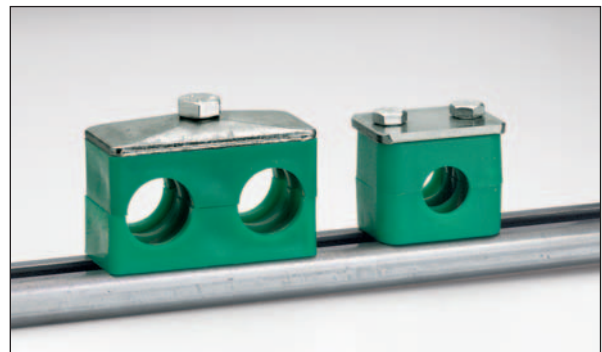
**RC-RN-M6**

M6 THREAD SUITS ALL RCS CLAMPS & RCD GROUP 1 CLAMPS



**RC-RN-M8**

M8 THREAD SUITS RCD GROUPS 2 TO 5 CLAMPS



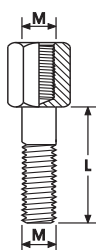
## ASSEMBLY WITH MOUNTING RAIL

Mounting Rail is available in lengths of 2 metres, and in three different heights. Mounting Rail can be welded on, or screwed on. Insert Rail Nut(s) into Mounting Rail, and when located in the correct position, twist Rail Nut in clockwise direction to lock it in place.

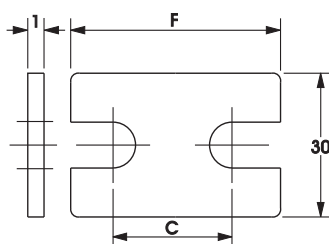
Then mount lower half of Jaws onto Rail Nut, insert Hose or Tube and position upper half of Jaws; secure in place with Top Plate and Bolt(s).

Clamps should be positioned both before and after bends, as near as possible to the bend.

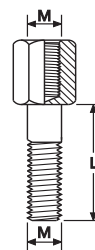
## STACKING COMPONENTS



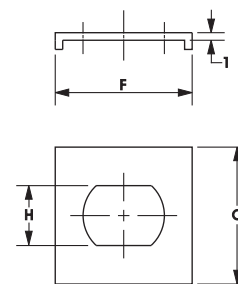
RCS-BS



RCS-PS



RCD-BS



RCD-PS

SINGLE CLAMP STACKING		SINGLE CLAMP PLATE STACKING		DOUBLE CLAMP BOLT STACKING		DOUBLE CLAMP PLATE STACKING	
DIMENSIONS M x L		DIMENSIONS F x C		DIMENSIONS M x L		DIMENSIONS F x C x H	
<b>PART NO</b>	<b>mm</b>	<b>PART NO</b>	<b>mm</b>	<b>PART NO</b>	<b>mm</b>	<b>PART NO</b>	<b>mm</b>
RCS-1BS	M6 x 20	RCS-1PS	34 x 20	RCD-1BS	M6 x 20	RCD-1PS	32 x 30 x 13
RCS-2BS	M6 x 25	RCS-2PS	40 x 26	RCD-2BS	M8 x 20	RCD-2PS	32 x 30 x 14
RCS-3BS	M6 x 30	RCS-3PS	48 x 33	RCD-3BS	M8 x 29	USE RCD-2PS*	32 x 30 x 14
RCS-4BS	M6 x 35	RCS-4PS	57 x 40	RCD-4BS	M8 x 34	USE RCD-2PS*	32 x 30 x 14
RCS-5BS	M6 x 50	RCS-5PS	68 x 52	RCD-5BS	M8 x 47	USE RCD-2PS*	32 x 30 x 14

\*Group 2 Stacking Plate also suits Groups 3, 4 & 5.

## ASSEMBLY WITH STACKING COMPONENTS

Fasten Bottom Plate or Mounting Rail & Rail Nuts. Position lower half of Jaws; then Hose or Tube; and then upper half of Jaws. Secure in place with Stacking Bolt(s), ensuring the extended hex of Stacking Bolt(s) protrudes above upper half of Jaws. Stacking Plate is then placed over Stacking Bolt(s) to prevent the Bolt(s) turning. The next Mounting Clamp can then be mounted on top of first clamp.

**RCS** Single Clamps must be of the same Group to be stacked on top of each other. **RCD** Double Clamps of different Groups of Groups 2 to 5 can be stacked. **RCD** Double Group 1 Clamps can only be stacked on other Double Group 1 Clamps. Clamps should be positioned both before and after bends, as near as possible to the bend.



## RECOMMENDED SPACING

CLAMP mm	MAXIMUM DISTANCE BETWEEN CLAMPS mm
6 to 14	900
15 to 22	1200
23 to 28	1500
30 to 38	2000
40 to 48,3	2500
50 to 57	3000

## RECOMMENDED BOLT TORQUE

SERIES	BOLT SIZE	Nm	ft.lbf	
RCS Series Single Clamps	All Groups	M6	8	6
RCD Series Double Clamps	Group 1	M6	5	4
	Group 2-4	M8	12	9
	Group 5	M8	8	6